

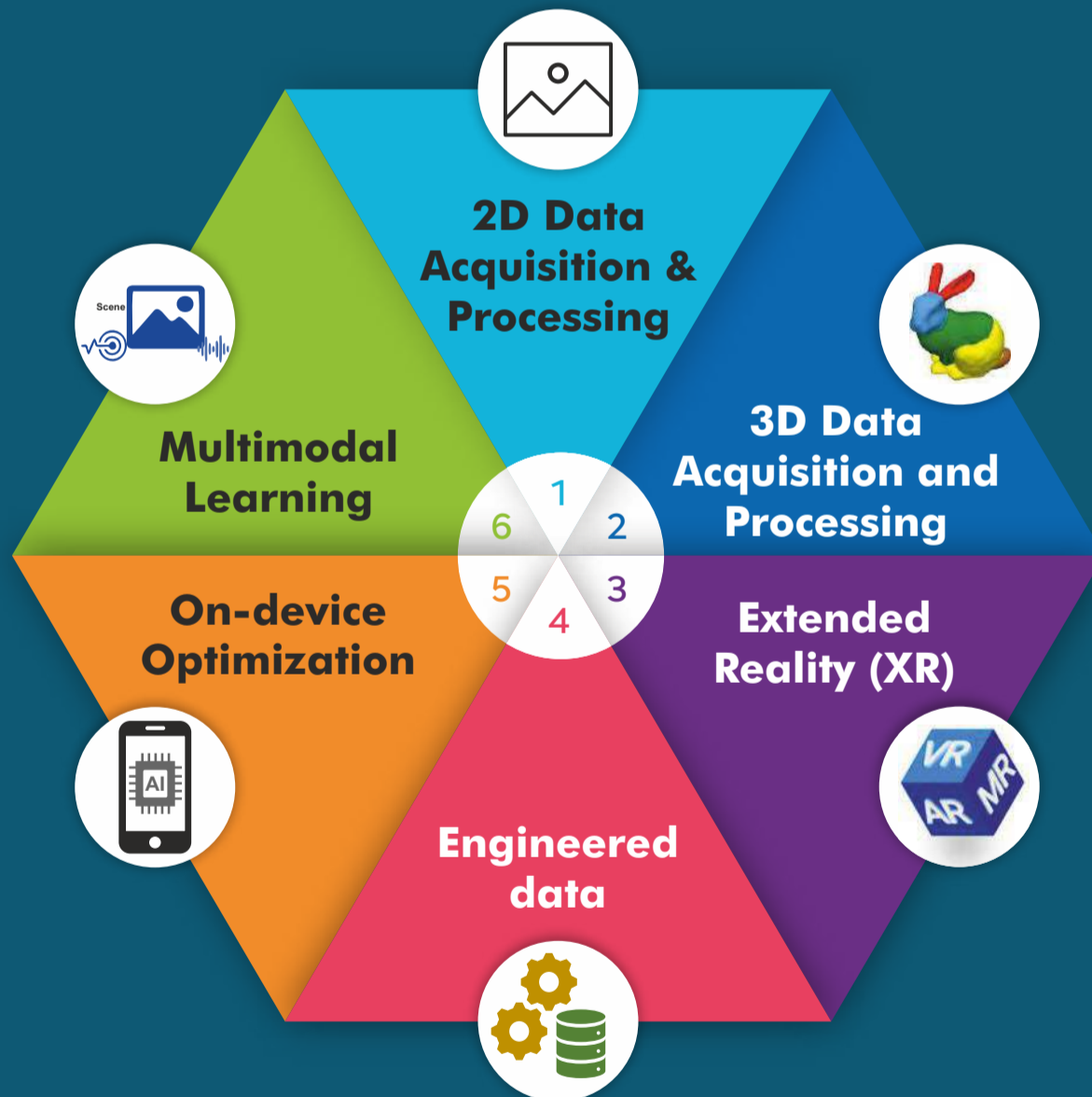
Admissions open for **MS (Engg.) by Research in VISUAL INTELLIGENCE : 2024-25**

KLE Technological University constantly strives to build industry-academia engagement to provide a forum for collaborative research. Towards this, a research-oriented Master's program MS (Engg.) by Research in Visual Intelligence, is initiated to cater to the research requirements of the professionals working in industries.

DIFFERENTIATOR FROM M. TECH PROGRAM

- The selection of the research topics will be in-line with the thrust areas of the industry research.
- The course projects will be in-line with ongoing projects in the industry.
- The expectation of the research work is POC/Component(s) of a product with indexed publication.
- Internal (KLE Tech) and external (Scholar's parent industry) reviewers will contribute to the potential research outcome.

RESEARCH FOCUS AREAS



Program duration : 3 years (6 semesters with two semesters per year)

Expectations for the award of the Degree:

- Six courses to be completed in 2 years.
- POC / Component(s) of product with indexed publication.

Who Can Apply : Candidates with BE or equivalent Degree from a recognized University with an average score of 70% / patent in the scholar's name as an inventor. Aspirants with impressive research profiles will be accorded a higher priority.

Interested aspirants can fill out this form <https://forms.gle/du7kc66HKDCMgxp66> by 26th August 2024.
 For more details, kindly visit the website : <https://www.kletech.ac.in/ms-engg-by-research-in-visual-intelligence>
 For any queries, contact: sujata_c@kletech.ac.in